



iFlexRail™

Column Guard+

A-SAFE



Designed to provide bespoke protection of columns, building supports and structures of any size and with any section shape; square, rectangular, circular or irregular.

The addition of a Traffic Rail at the base provides greater resistance to vehicle impacts.

This energy-absorbing guardrail system provides visual guidance to drivers and an extreme strength physical shield for vulnerable structures. The rails are set apart from the column to isolate and absorb collision forces away from uprights.

Fully modular and adaptable, the guardrails can also be supplied as two or three sided units to safeguard columns located at the corner of two walls or in front of walls.

Tested to the global benchmark in guardrail safety

bsi. PAS 13

Code of Practice for Workplace Safety Guardrails



**BANKS
INDUSTRIAL
GROUP**

Your Authorized A-SAFE Distributor

856-687-2227 • sales@banksindustrial.com • BanksIndustrial.com
PO Box 382 • Berlin, NJ 08009

Engineered for performance

Memaplex™ advanced strength polymer created from an exclusive composition of the most sophisticated polyolefins and rubber additives, expertly blended for unequalled strength and flexibility.

Unrivalled recovery through a unique built-in memory that allows the guardrail to flex, cushion and reform repeatedly upon impact, saving vast amounts in guardrail and vehicle repairs.

Huge return on investment from incident prevention and downtime avoidance as rails, vehicles, floors and infrastructure do not need replacing or repair.

Self colored and UV stabilized for continued high visibility and long lasting aesthetics with no repainting.

Ultra-low maintenance material is chemical and water resistant, non-corrosive, non-scratch and self colored so no repainting, rusting, flaking or corrosion.

Energy absorption system dissipates impact forces through the guardrail and away from floors and fixings, preventing costly damage.

Hygiene seals remove ingress points.

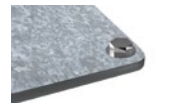
Multi-directional system ensures a streamlined fit around any column shape and any column location.

Zinc nickel, electrophoretic coating on base plates as standard, provides advanced protection against corrosion damage.

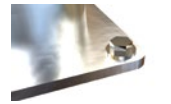
ADDITIONAL BASE OPTIONS



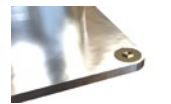
Countersunk Bolts



Galvanized Steel



Stainless Steel 316 Standard

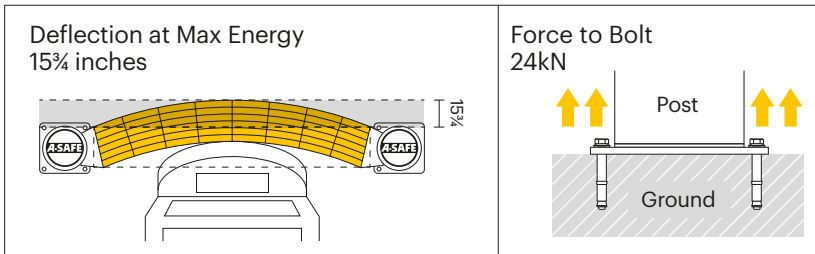


Stainless Steel 316 Countersunk

Technical Information

Impact Test	Impact Angle on 59 inch Post Centers			
	90°	67.5°	45°	22.5°
Mid Rail Max Energy (Joules)	13,750	16,109	27,500	93,891

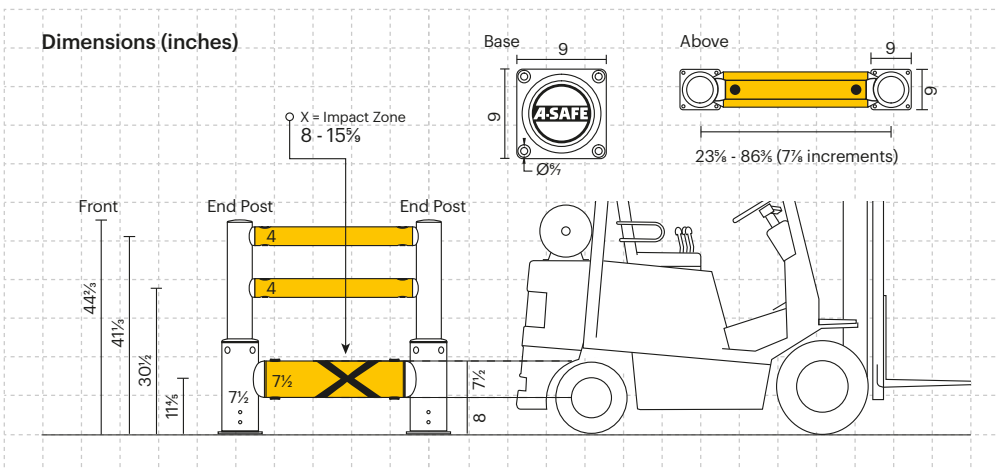
End Post Max Energy (Joules) - 90°	6,500
Mid Post Max Energy (Joules) - 90°	6,500



Material Properties	MEMAPLEX™
Temperature Range	14°F to 122°F
Ignition Temperature	698°F to 734°F
Flash Point	662°F to 698°F
Toxicity	Not Hazardous
Chemical Resistance	Excellent - ISO/TR 10358
Weathering Stability (Grey Scale)	5/5*
Light Stability (Blue Wool Scale)	7/8**
Static Rating (Surface Resistivity)	1015 - 1016 Ω
Hygiene Seals	Yes

* Weathering scale 1 is very poor and 5 is excellent

** Light stability scale 1 is very poor and 8 is excellent

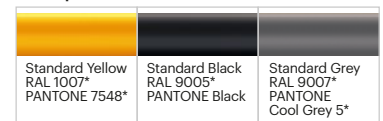


Color Combinations

Post Options



Rail Options



*Please note that the RAL and PANTONE colors listed are the closest match to standard A-SAFE colors, but may not be exact matches of the actual product color and should be used for guidance only.



Your Authorized A-SAFE Distributor

856-687-2227 • sales@banksindustrial.com • BanksIndustrial.com
PO Box 382 • Berlin, NJ 08009