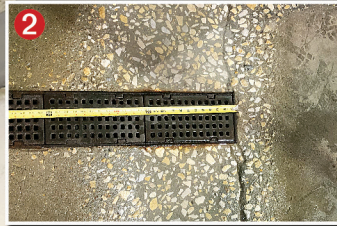


# RAPID CONCRETE REPAIR FOR ICE RINK



## Epoxy Aggregate Repair Ready for Game Time in 48 Hours

Zambonis keep the ice slick but are rough on concrete. Tire studs formed depressions in the floor of this ice rink maintenance area. Water and ice from an undersized drain pit collected in these ruts. Wheel abrasion and freeze/thaw damage caused cracking in the concrete, forming a safety hazard. BIG solved the problem quickly by enlarging the drain pit and resurfacing the floor with a high-performance, specialized (Belzona 4131) rapid cure epoxy aggregate that is far stronger than concrete. It provides excellent protection against abrasion, impact, vibration and chemical attack, proven to last for many years. The customer reopened the floor in only 48 hours.



Concrete floor damage from traffic and freeze/thaw effects.

- 1 Zamboni machines wear down concrete floors
- 2 Undersized drain pit and cracked concrete
- 3 Drain pit widened to increase capacity
- 4 Fast cure Belzona 4131 used to resurface damage

